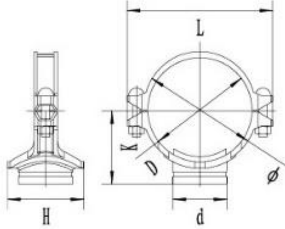


XGQT03

Mechanical Tee Grooved



The specific items list shall be subject to the public notice of FM and UL website.

Nominal Size mm/in	Pipe O.D mm/in	Working Pressure PSI/MPa	Bolt Size	Dimensions mm/in				Hole cutting dimensions mm/in	UL	FM
				No. - Size mm	Ø	L	K			
150x50	165.1x60.3 6.500x2.375	300 2.07		194	247	123	97	61	•	•
				7.638	9.724	4.842	3.819	2.402		
150x65	165.1x76.1 6.500x2.996	300 2.07	2-M16x85	194	247	125	123	81	•	•
				7.638	9.724	4.921	4.843	3.189		
150x80	165.1x88.9 6.500x3.500	300 2.07		194	247	125	136	86	•	•
150x100	165.1x114.3 6.500x4.500	300 2.07		194	247	125	134	114	•	•
150x25 6x1	168.3x33.7 6.625x1.327	300 2.07		198	247	125	77	38	•	•
150x32 6x1½	168.3x42.4 6.625x1.669	300 2.07		198	247	128	82	46	•	•
150x40 6x1½	168.3x48.3 6.625x1.900	300 2.07		198	247	128	92	51	•	•
150x50 6x2	168.3x60.3 6.625x2.375	300 2.07		198	247	128	98	61	•	•
150x65 6x2½	168.3x73 6.625x2.874	300 2.07		198	247	128	123	81	•	•
150x65 6x2½	168.3x76.1 6.625x2.996	300 2.07		198	247	128	123	81	•	•
150x80 6x3	168.3x88.9 6.625x3.500	300 2.07		198	247	128	136	86	•	•
150x100 6x4	168.3x114.3 6.625x4.500	300 2.07		198	247	128	157	114		
200x25 8x1	219.1x33.7 8.625x1.327	300 2.07		250	310	152	77	46	•	•
200x32 8x1½	219.1x42.4 8.625x1.669	300 2.07		250	310	152	83	46	•	•
200x40 8x1½	219.1x48.3 8.625x1.900	300 2.07		250	310	152	92	51	•	•
200x50 8x2	219.1x60.3 8.625x2.375	300 2.07		250	310	152	97	61	•	•
200x65 8x2½	219.1x73 8.625x2.874	300 2.07	2-M16x100	250	310	152	130	81		
200x65 8x2½	219.1x76.1 8.625x2.996	300 2.07		9.843	12.205	5.984	5.118	3.189	•	•
200x80 8x3	219.1x88.9 8.625x3.500	300 2.07		9.843	12.205	5.984	5.394	3.386	•	•
200x100 8x4	219.1x114.3 8.625x4.500	300 2.07		9.843	12.205	5.984	6.378	4.488	•	•
200x150 8x6	219.1x168.3 8.625x6.625	300 2.07		9.843	12.205	6.850	8.425	6.299		
250x100 10x4	273.0x114.3 10.748x4.500	300 2.07	2-M22x130	309	376	186	162	114		
250x125 8x6	273.0x139.7 10.748x5.500	300 2.07		12.165	14.803	7.323	6.378	4.488		
				309	376	186	186	135		
				12.165	14.803	7.323	7.323	5.315		