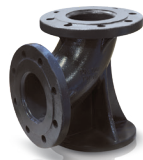


# FIRE HYDRANT

## Fire Hydrant / Model AFH-1000



AFH-100 model fire hydrants are a valve group that provides the firefighters with the water at the flow rate and pressure required to intervene in the fire.

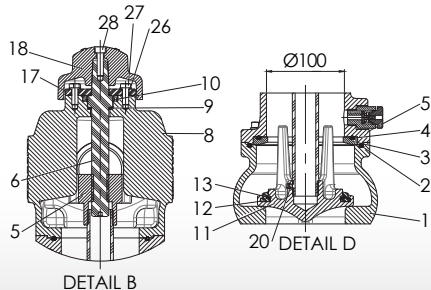
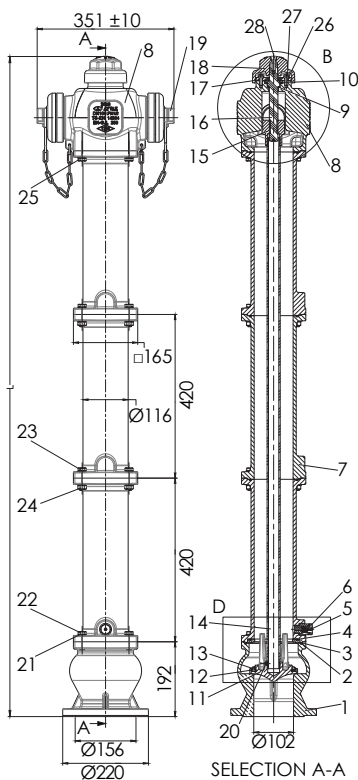
AFH-100 model fire hydrants have automatic drip system against to freezing.

Automatic dripping feature provides AFH-100 model hydrants to be in the "dry barrel type" hydrant category.

### Specifications

<b>Body</b>	: Cast Iron GG-25
<b>Elbow</b>	: Cast Iron GG-25
<b>Coating</b>	: Epoxy powder coating
<b>Temperature Range</b>	: 0 °C - 80 °C (32° F- 176° F)
<b>Inlet Size</b>	: 4" (DN100)
<b>Outlet Size</b>	: 2 x 2 1/2" (2 pcs x DN65)
<b>Design Standard</b>	: EN 14384
<b>Flange Standard</b>	: EN1092-2 (ISO 7005-2), PN16
<b>Max Working Pressure</b>	: 232 psi (1600kPa)

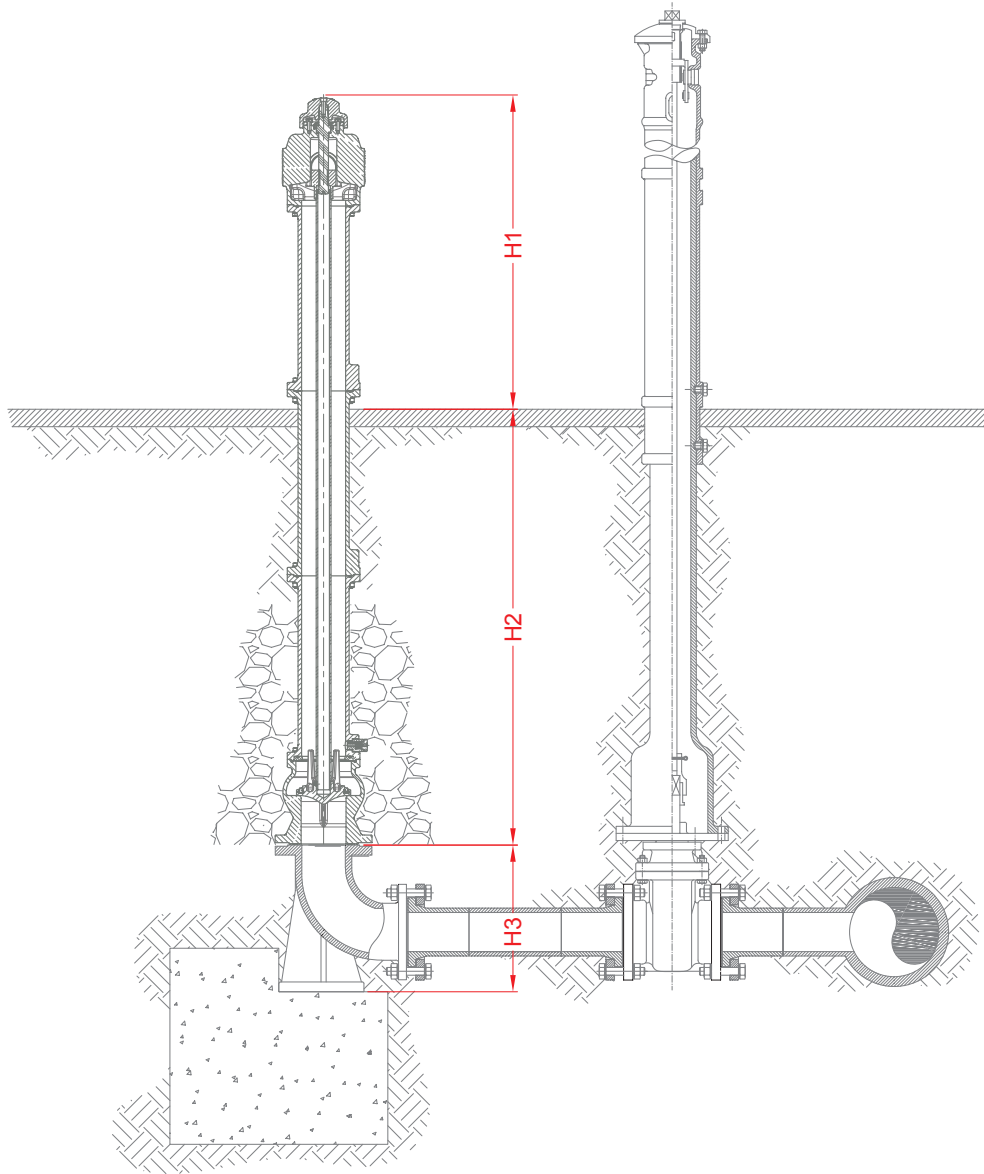
MODEL	LENGTH	PART NO
AFH-100-130	130 cm	703702000145
AFH-100-170	170 cm	703702000175
AFH-100-215	215 cm	703702000215
AFH-100-250	250 cm	703702000245



NO.	PART	MATERIAL	SIZE
1	Lower Body	GG 25	-
2	O-Ring	NBR	Ø4x139
3	Bushing	Ms58	-
4	O-Ring	NBR	Ø4x116
5	Intermediate Section-1	GG 25	-
6	Anti Frost	Ms58	-
7	Intermediate Section-2	GG 25	-
8	Upper Body	GG 25	-
9	Bearing Material	Delrin	-
10	Seal	-	Ø32xØ45x7
11	Disc	GGG 40	-
12	O-Ring	EPDM	-
13	Internal cCrclip	AISI 301	-
14	Transmission Pipe	St 37-2	-
15	Bearing Strip	GGG 40	-
16	Camshaft	AISI 420	-
17	Upper Head	St 37-2	-
18	Opening Head	GG 25	-
19	Coupling with Chained	Aluminium	DN65
20	Set Screw	-	-
21	Spring Washer	-	DIN 128 - A12
22	Bolt	8,8	M12x40
23	Bolt	8,8	M12x50
24	Nut	8,8	M12
25	Bolt	8,8	M12x35
26	Spring Washer	-	DIN 128 - A8
27	Bolt	8,8	M8x22
28	Xex Socket Head Bolt	8,8	M8x30

**FIRE HYDRANT**

**Dimensions**



DIMENSIONS					
WATER INLET	WATER OUTLET	LENGTH (mm)	H1 (mm)	H2 (mm)	H3 (mm)
DN100	DN65 x DN65	1300	900	400	270
		1700		800	
		2150		1250	
		2500		1600	