

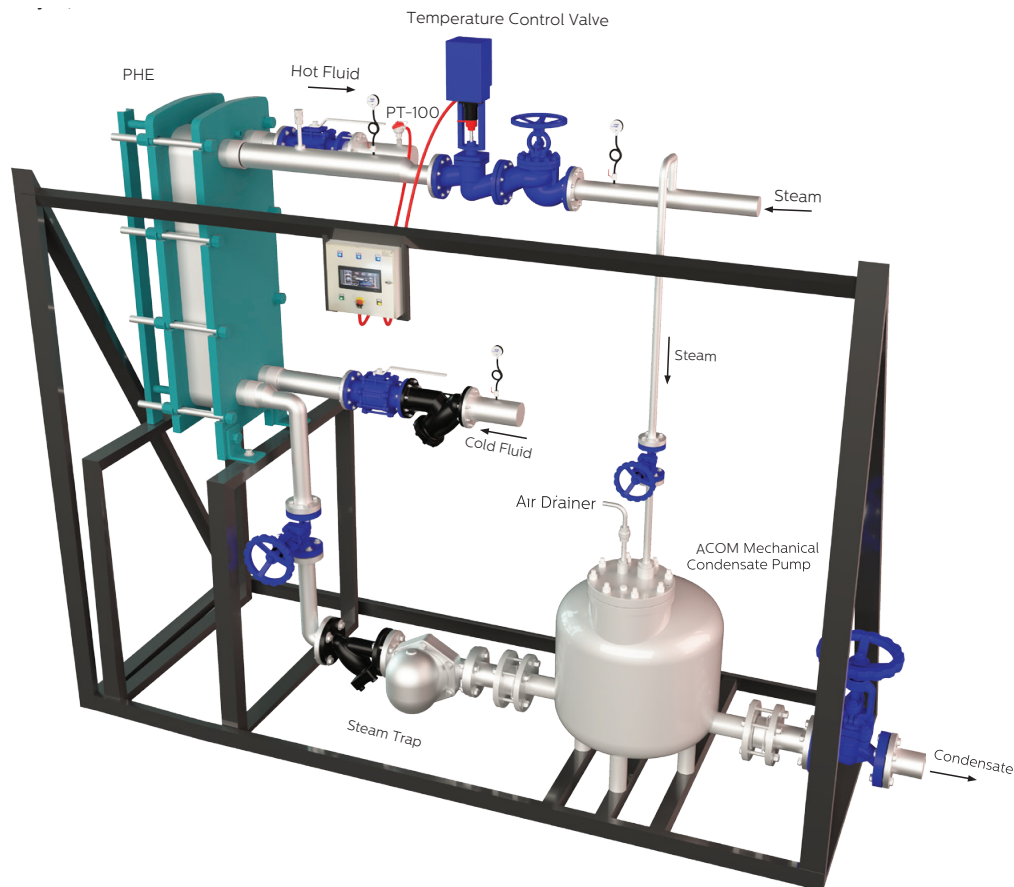
CONDENSATE PUMP ACOM-ACOP



Required Information for Selection:

- Inlet pressure (bar) to the condensate pump?
- Condensate flow rate (kg/h)?
- Steam supply pressure (bar) for the condensate pump?
- Back pressure after the pump? (The back pressure is the result of rises in the line, elbows, horizontal distance, and whether it is going to an atmospheric tank or a closed tank, etc. They can send us isometry for calculation.)
- Where is the condensate pump intended to be used in the system? (For example, at the process outlet with temperature control, at the heat exchanger outlet, etc.)
- Application Information (Single Exchanger or Multiply applications? Process Information etc.)

ACOM



ACOP

